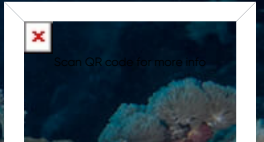




# Blue Kingdom



## Umluj Mark 11

Top Dive Time

**45-60** Min

### Distance

23 KM From Ash Shab'an Coast Guard  
Approx 55-70 minutes by boat

### Skills

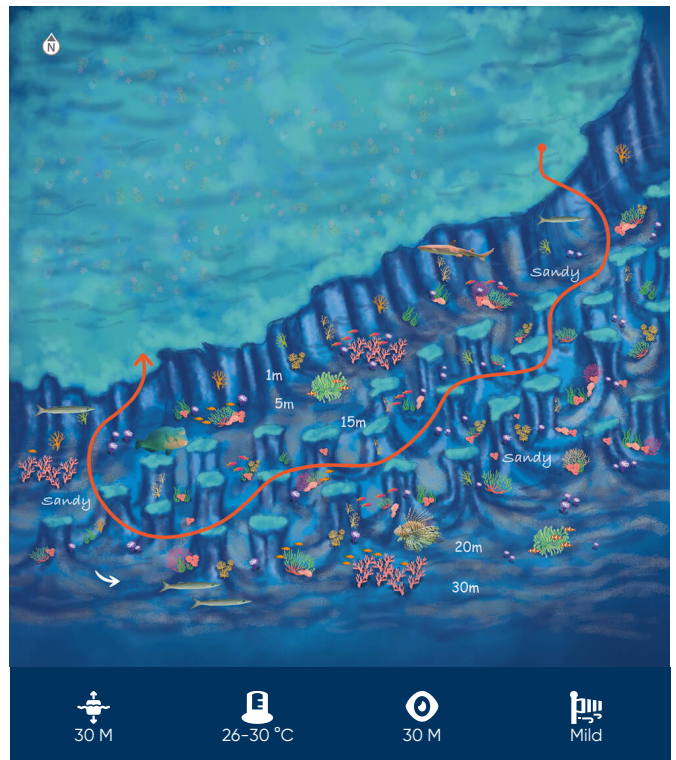
Beginners Advanced Free Diving

Mark 11 is the southernmost site in Umluj, with a fairly long boat ride to reach the dive site. Worth the wait, this location boasts magical gardens of anemone and opalescent displays that are the epitome of biodiversity. The beckoning depths of Mark 11 are suitable for advanced divers because the mild currents are consistent to a depth of 30m. The faint slope of the reef wall is adorned with dazzling growths of fire coral, colourful soft coral formations and plentiful sea anemone, which serve as the habitat for clownfish.

Upon reaching 25m, divers can swim amongst coral heads and pinnacles located on a sandy plateau. The plateau then leads to a drop-off wall extending more than 30m and covered in an assortment of soft corals.

Numerous reef fish are easily distinguished in these waters due to the excellent visibility of 20-30m. Clusters of anthias, parrotfish and lionfish can be seen playing among the coral. Divers can also experience a sense of thrill while swimming alongside yellowtail barracuda and whitetip sharks.

**Sea anemones, sometimes referred to as the 'flowers of the sea', are carnivorous invertebrates which capture fish with their venom-fill .....**



Coordinates  
24°23'48"N  
37°9'28"E

Entry  
-  
-

Exit  
-  
-

Coast Guard

994

Ambulance

997