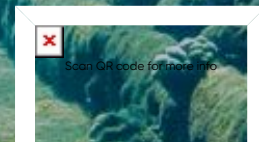




# Blue Kingdom



Amaala

## Alnoman Island

Top Dive Time

**45-60** Min

Distance

2.5 KM From Alquff Coast Guard

Approx 15 - 20 minutes by boat

Skills

Beginners Advanced Snorkellers Free Diving

Located near the coast between AMAALA and Duba lies the rocky, uninhabited island of Alnoman. This dive spot provides plenty of opportunities for once-in-a-lifetime adventures for divers of many experience levels.

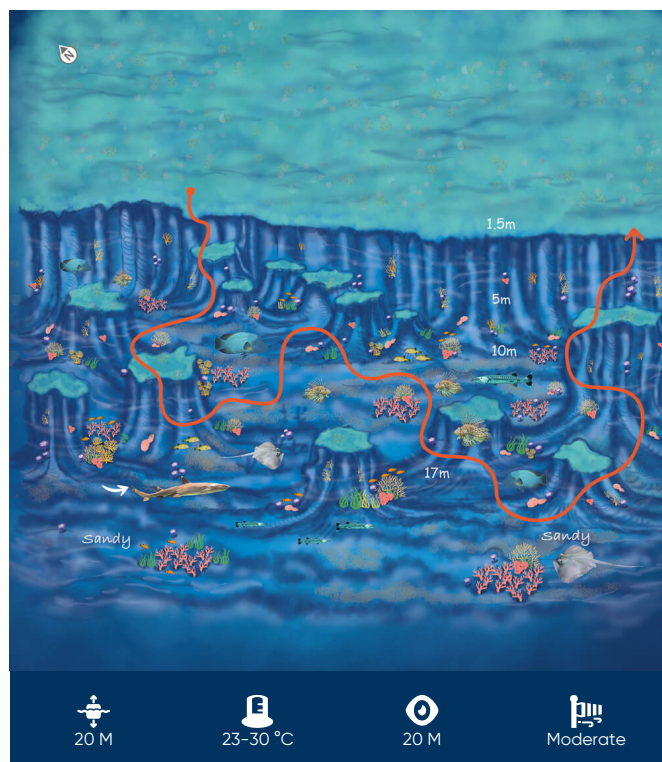
Visitors to the island can expect a real treat, as there are five different sites around the island just waiting to be explored. However, photography, history and adventure enthusiasts are sure to be most excited by the island's third site. Right at the end of the route, divers will come across a shipwreck immersed at a depth of just 5m.

Nestled against the island's southern reef, the underwater remains of this once mighty ship are now worn from the passing of time, encrusted with an assortment of coral and home to a variety of marine organisms.

Thanks to the excellent 15-20m visibility boasted by all five sites, divers can enjoy front-row seats with clear lines of view to the stunning coral formations, vigorous barracuda, and schools of Napoleon wrasse enjoying the warm waters of Alnoman Island.

Upon nearing the sandy bottoms of all five sites, located at 20m, divers are able to swim through numerous pinnacles and clusters of coral heads.

Amongst the cora .....

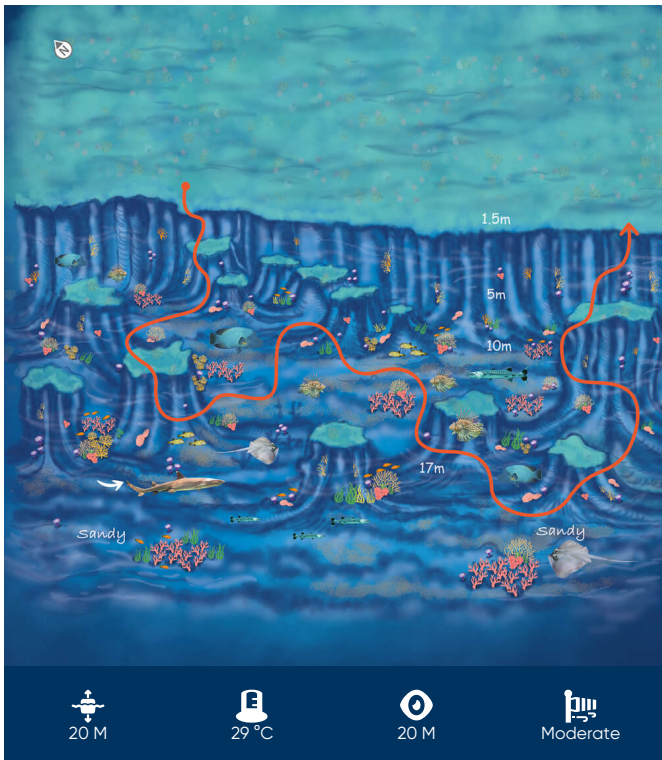


Coordinates	Entry	Exit
27°4'25"N	-	-
35°46'52"E	-	-

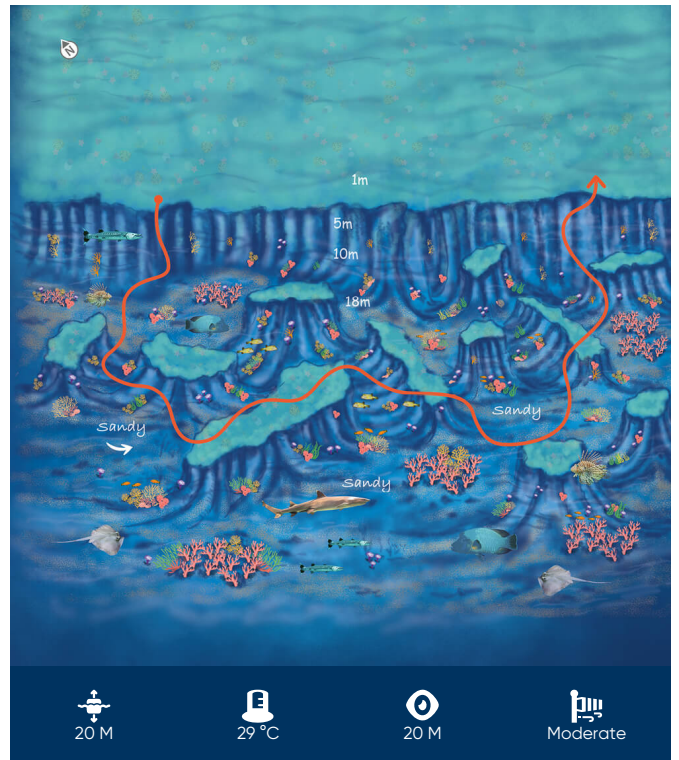
Coast Guard 994

Ambulance 997

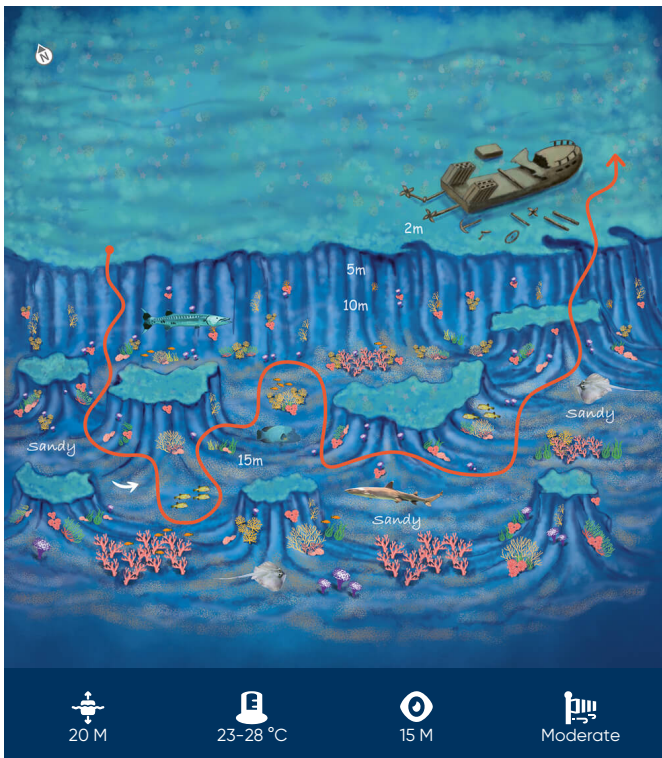
Site 1



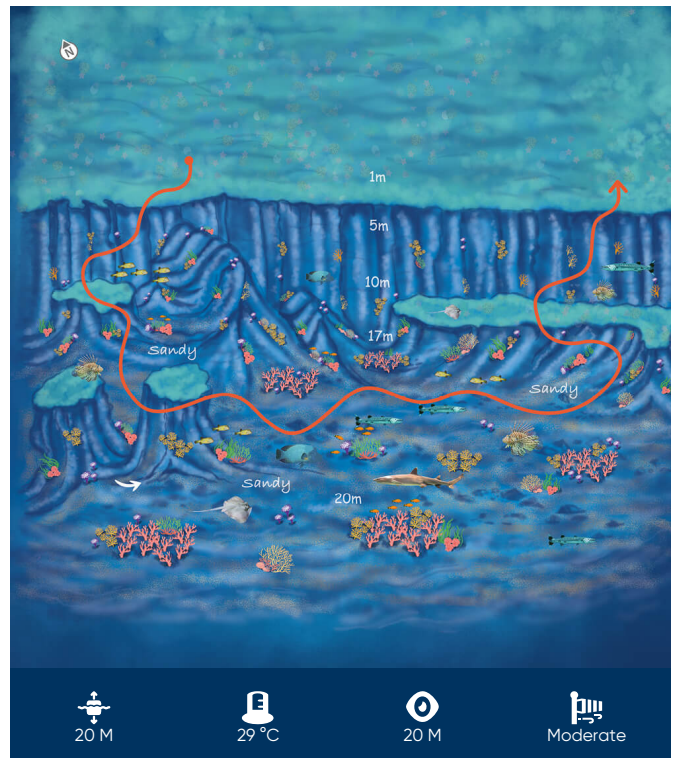
Site 2



site 3



site 4



# site 5

