

Blue Kingdom

Al Lith Sha'ab Muzzahar

Top Dive Time

45-60 Min

Distance

KM From

Skills

Advanced Free Diving

Sha'ab Muzzahar is another popular dive site located off the coast of Al Lith in the Red Sea. Strong currents mean that this is a location suitable only for technically advanced divers.

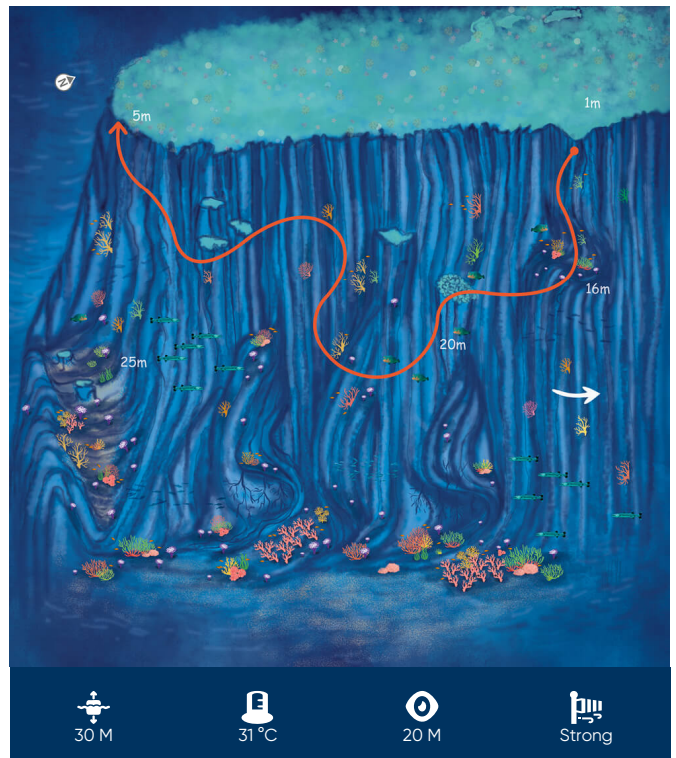
However, the spectacular multicoloured coral and possibility of seeing some incredible marine life make this dive worth the effort.

With visibility up to 20m and a maximum depth of 30m, divers can explore the various coral formations and swim-throughs along the sloping reef that leads down to the sandy bottom.

The most noticeable of the marine plant life on this dive are the neon orange sponges that drip like candle wax from these overhangs. These orange fingers cling to bushes of coral, some over a metre in length. Shoals of small, orange anthias flit in and out of the plant life.

The vibrantly coloured reef fish are typically found in large schools and are known for their unique social structure. Within a school, there is usually one dominant male fish who is responsible for mating with the females. All of the other fish in the school are either females or non-dominant males, and they are responsible for protecting the school from predators.

Divers can also expect to encounter larger pelagi



Coordinates
19°29'40"N
40°3'20"E

Entry
-
-

Exit
-
-

Coast Guard

994

Ambulance

997