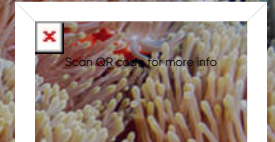




Blue Kingdom



Al Lith Thahra Island

Top Dive Time

45-60 Min

Distance

KM From

Skills

All Levels

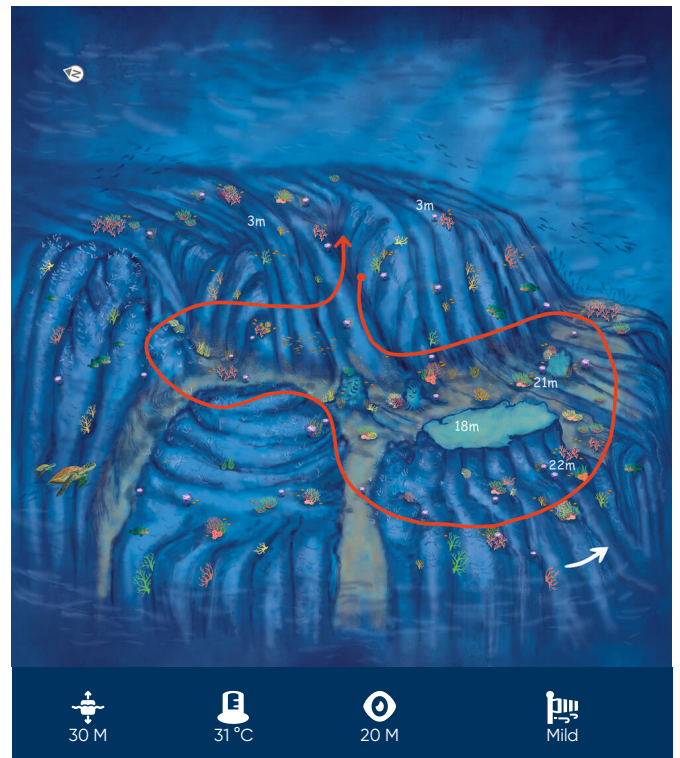
This dive starts at on a plateau that sits only 3m below the surface. Home to small clusters of hard and soft coral, this ridge is also a popular feeding ground for hawksbill turtles. If you are lucky, you may spot them using their narrow, bird-like beaks to graze.

The dive then takes you down 18m to a sandy ridge featuring remarkable coral gardens. There is a spectacular bloom of the Caryophylliidae anemone which appears to radiate light as its finger-like tentacles sway gently in the current. These types of anemones are quite rare in the Red Sea, so spotting one of these breathtaking creatures is a highlight on this dive.

Red Sea anemonefish can be seen darting in and out of this unusual home. These orange-and-black-banded creatures have a symbiotic relationship with their host, as the anemone provides protection and shelter and the clownfish provide the anemone with nutrients and scares off potential predators.

There are also some striking hard coral forests in this area, including a large patch of leaf coral. This feeding ground attracts a cornucopia of wildlife and is a great place to admire both the beautiful colours of the coral, and the huge range of tropical fish that come here to ea

.....



Coordinates
19°49'38"N
39°53'36"E

Entry
-
-

Exit
-
-

Coast Guard

994

Ambulance

997