

Blue Kingdom



Rabigh Sha'ab Al Baydah

Top Dive Time

45-60 Min

Distance

KM From

Skills

Beginners Advanced Technical Free Diving

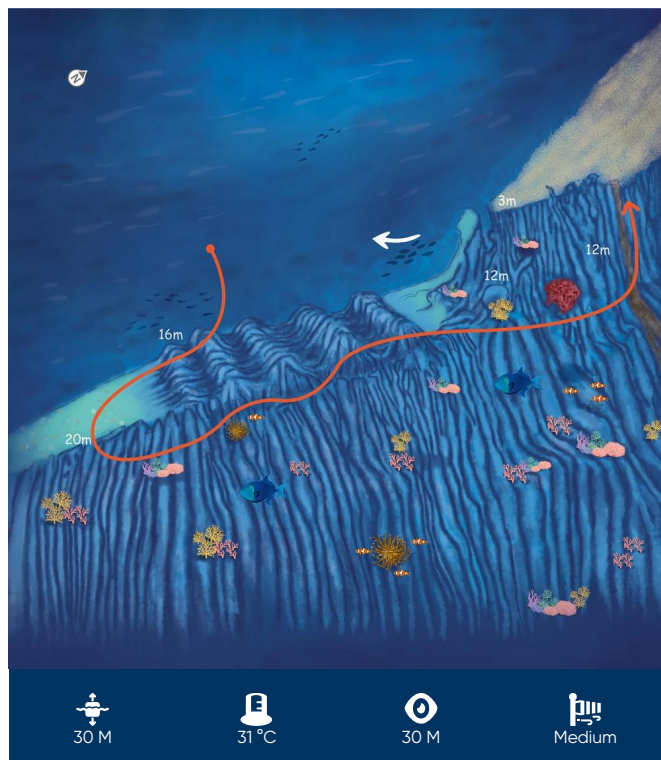
Only slightly further afield than the popular Five Sisters sites, the Sha'ab Al Baydah reef is one of the area's best-kept secrets. The pristine waters are home to a host of fish and coral, and with sea temperatures of 31°C, a medium current and crystal-clear visibility of more than 35m, divers of all levels will enjoy exploring. This site is not recommended for snorkellers, however.

At a depth of 30m, the reef is easily accessible and bursting with colour, offering up endless possibilities for budding underwater photographers.

While a waterproof camera may be an essential item on this dive, take care not to disturb the marine life living in this area. Dive lights, camera arms and mesh bags should be properly secured with lanyards and clips, as any loose equipment can seriously damage the fragile corals.

It may be tempting to interact with the marine life or take a souvenir home. However, the site at Sha'ab Al Baydah is still relatively unaffected by human development, so it's imperative that you leave the reef just as you found it in order to preserve this vibrant ecosystem.

The dive itself begins at the lighthouse, on a long plateau with large pinnacles and hill formations



Coordinates
22°42'46"N
38°48'14"E

Entry
-
-

Exit
-
-

Coast Guard

994

Ambulance

997