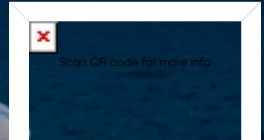




Blue Kingdom



Yanbu

Almarkeb (Marker 32)

Top Dive Time

45-45 Min

Distance

KM From

Skills

Advanced Technical Free Diving

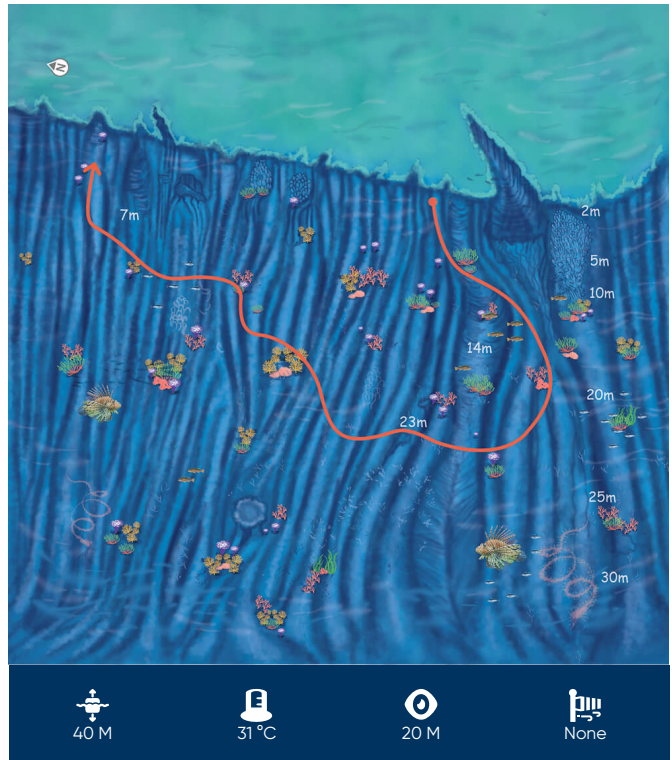
Almarkeb Reef offers divers the chance to explore a diverse ecosystem with a vast array of marine life and coral formations. The crystal-clear waters provide excellent visibility, allowing divers to fully immerse themselves in the underwater world.

The reef boasts a stunning array of coral formations, including delicate branching corals, large table corals and colourful soft corals, which create a mesmerising underwater landscape. The marine life is equally impressive, with an array of species to discover. Colourful tropical fish can be seen darting between the corals, while sea turtles glide gracefully through the water, and stingrays and lionfish are sure to leave a lasting impression.

The west corner of the site features a beautiful saddle that is divided by a stunning coral head, providing a focal point for divers to explore. The marine life includes colourful tropical fish, sea turtles and even the occasional shark, as well as fascinating creatures such as stingrays and lionfish.

The sharp slope on the right of the site is particularly impressive, as it descends to over 60m, providing technical divers with an opportunity to explore the deeper parts of the reef. However, be careful, as there

.....



Coordinates	Entry	Exit
23°51'54"N	-	-
37°53'19"E	-	-
Coast Guard	994	
Ambulance	997	

40 M 31 °C 20 M None