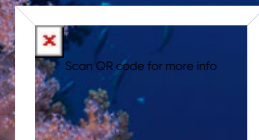


Blue Kingdom



Yanbu

Tahlat al Kebedat

Top Dive Time

60-60 Min

Distance

KM From

Skills

All Levels

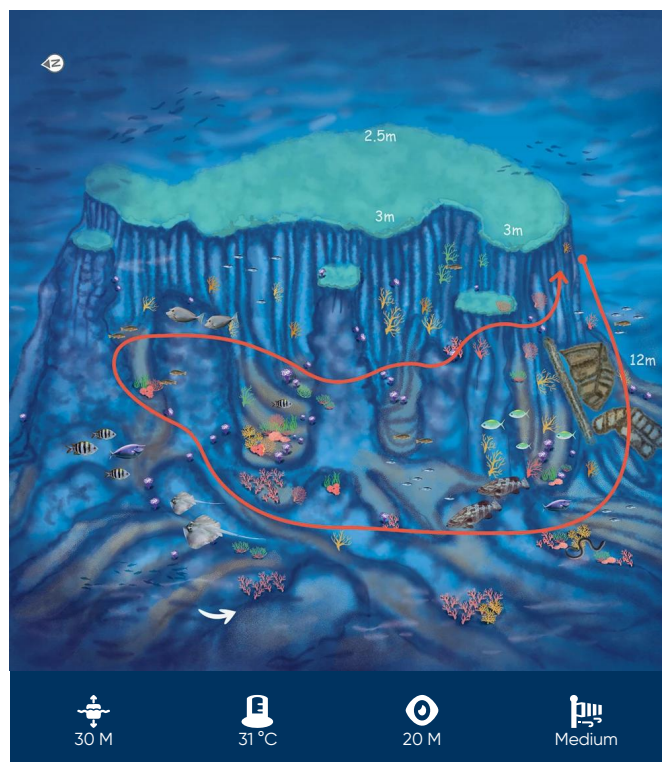
Just off the coast of Yanbu lies a versatile diving site offering two distinct experiences. While one dive poses a challenge for advanced divers, the other provides a more relaxed experience for beginners. Nevertheless, both dives offer an unparalleled opportunity to explore the beautiful and diverse underwater landscape of the Red Sea.

The first dive should be accessed using a mooring line, as the current here can be swift. The initial three-metre-deep ledge is home to sections of a shipwreck. After descending to the seabed 30m below, divers will come across the rest of the wreck, now fully reclaimed by the sea and covered in coral.

The true challenge of this dive will be revealed upon return, as you'll need to navigate through the tall, thin pinnacles sitting just off the main plateau.

However, there are plenty of things to admire as you snake past the peaks, including sections of burnt-orange sea whip reaching out of the rocks and coral heads surrounded by shoals of beautifully coloured reef fish.

The second dive is serene and peaceful. Descending onto the flat, sandy seabed dotted with coral may seem unremarkable at first, but there are plenty of hidden treasures waiting to be



30 M



31 °C



20 M



Medium

Coordinates

24°3'26"N

37°51'30"E

Entry

-

-

Exit

-

-

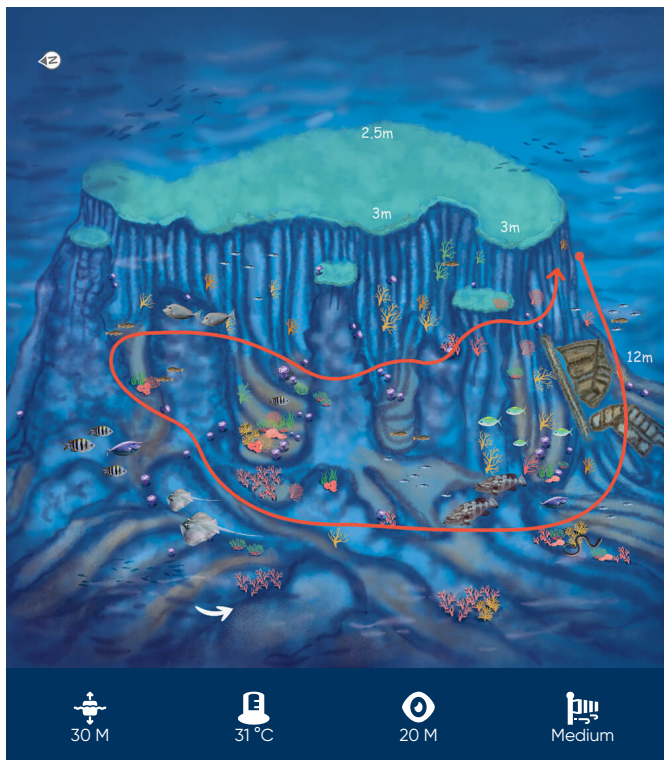
Coast Guard

994

Ambulance

997

Site 1



Site 2

